

J R McKenzie Trust

Annual Report 2004





Board Members

Peter Holst (Chair)

Wellington

Bob Baird

North Shore City

Radha Balakrishnan

Wellington

Neville Caird

Dunedin

Pania Ellison

Wellington

Melita Farley

Wellington

Warren Lindberg

Auckland

John McKenzie

North Shore City

Peter McKenzie

Waikanae

John Spooner

Auckland

Brian Palliser

Christchurch

Tricia Walbridge

Wellington

David Wright

Hamilton

Iain Hines

Executive Director

Alison Glen

Administration Officer

For More Information

You are welcome to more information about the Trust,
please contact the office:

Iain Hines or Alison Glen

J R McKenzie Trust

PO Box 10 006

Wellington

Ph (04) 472 8876

Fax (04) 472 5367

Email info@jrmckenzie.org.nz

Web www.jrmckenzie.org.nz

Introduction

The J R McKenzie Trust was established in 1940 by John Robert McKenzie, the founder of the “McKenzies” chain of department stores. From the time the company started in 1910 until it was sold in 1980, one third of the profits were placed in Trust for the people of New Zealand.

The goal of the Trust is to improve the quality of life of New Zealanders who have special needs, or who face disadvantage. The focus is on social, health and developmental needs, especially but not only, for children, young people and people with disabilities. The Trust makes grants to organisations that work in these areas, supporting existing services as well as innovative approaches to meeting needs and preventing problems. Grants are made for operating costs; to assist organisations to improve their skills and systems; and to encourage groups to work together.

The community support started by Sir John McKenzie has been continued by his son Sir Roy McKenzie and his grandchildren Peter McKenzie, John McKenzie and Robyn Gibson who serve as Personal Trustees. John and Peter are also members of the Board.

The Board is assisted by people within the Rotary movement throughout New Zealand. District committees largely made up of Rotarians assess local applications, and the Chairs of these committees are Board members. Other Board members are nominated or appointed because of their knowledge of the community and voluntary sector.



Chair's Report 2004



The gift of learning

Over the past year the Trust has continued its regular functions as well as starting to take action on the conclusions of 2003's major review of our work. While the review indicated a high level of satisfaction with the Trust's activities overall, we are mindful of the need for continuous improvement.

Learning from experience, both our own and others', helps us grow as individuals, organisations and as a community, and this year we are celebrating learning by sharing with you what some people in community organisations have learned. We have recognised the need for us to maintain our "learning mode" as an organisation, and we hope that this is also the case for those who seek our support.

Responsive grant making

Once more the Trust has made grants to hundreds of community organisations active in community development, social services and health. We have received similar numbers of applications as in recent years – over 700 so far – and have made grants in support of about three quarters of them. Most grants have contributed to operating and administrative costs, and we have also supported a number of new initiatives.

As suggested by the review, we are more explicitly encouraging collaboration between and among like-minded organisations, advocacy for social justice, preventative programmes, and a learning focus. We are also cautiously increasing the funds available for multi-year grants.

Targeted programmes

Building Pacific Organisations:

This programme focuses on improving the management and governance skills of Pacific organisations in New Zealand. It has included a small grants programme, outreach and work with other funders. The Tindall Foundation generously contributes each year. The programme is nearing the end of its sixth year, and will finish in 2006.

Refugee Employment Programme:

In the last year of this three-year initiative, we are putting more effort into sharing the experiences of the participating groups, and seeking wider changes in policy and practice to enhance the chances of successful work placements for refugees and others in similar circumstances.

Maori Landmark Initiative:

Last year's review highlighted, as a challenge and opportunity, the Trust's potential to make a more telling contribution to the disproportionate number of Maori facing disadvantage. We are developing a targeted programme in this area.

Working with others

The review also highlighted the value placed by community organisations on maintaining communication and relationships. We continue to do our best to stay in touch with social issues and the progress of the community and voluntary sector.

We have reviewed the ways in which the Trust and the Rotary movement work together, and are keen to explore further synergies. Rotary is at heart a form of "community philanthropy" that existed long before this label did.

We are also supportive of the sustained efforts to improve the infrastructure of the wider community and voluntary sector, and



applaud the vision and perseverance of the people leading this process.

New legislation affecting charities has the potential to assist community organisations – or to be a resented burden. It is little wonder that community responses include both cautious optimism and anxious pessimism. Our best wishes extend to the lawmakers charged with making the most of this opportunity.

Film about Sir Roy McKenzie

Paul Davidson's film **Giving it all away** was premiered this year. It captures the many facets of Sir Roy's contributions to his country. The Trust's history is also covered in the course of this interesting movie.

Thanks to the people

The efficient function of the Trust is due to a large number of volunteers, and a small but vital staff. At Board level, this year we welcomed Melita Farley, a person whose experience in and overview of the social sector belies her years. We are grateful that Melita has co-edited this year's Annual Report. The Regional Committees based on Rotary Districts continue to be very

important in keeping the Trust in touch with New Zealand. We again thank our two paid staff, Alison and Iain.

Beyond those who have a formal involvement, we acknowledge and thank the many New Zealanders who generously help us with information and advice.

Thanks also to the money generators – the people at Rangatira Limited and the Jayar Charitable Trust who manage the assets for the benefit of our communities.

My best wishes go to everyone concerned with the Trust, and to those concerned with improving the quality of life in New Zealand, especially for its least advantaged citizens. In particular I salute those who do so much as volunteers or often underpaid workers in the community sector.



**Peter Holst,
Chair**



Reviewing ourselves



J R McKenzie Trust

In 2003 the McKenzie Trust embarked on a wide ranging review of its focus and way of operating, in order to identify how it could make the greatest possible contribution with its resources.

When the Trust reflected on the way it went about the review and planning process in 2003, it identified several factors that made it particularly useful:

- Gathering the views of many groups that apply for grants, as well as others who know about social issues and funding for the community sector
- Hiring people with the right skills and knowledge to run the review
- Doing the review at a time when the Trust's personnel was relatively stable, and in a carefully planned way
- An openness to hearing others' views and to change
- Realistic expectations about what the Trust can achieve

Executive Director Iain Hines says, "The review helped shape our plan for the next five years and helped energise us. For many of us it also added to our personal development".



Meeting the needs of clients

Parkinsons New Zealand

In 2003 Parkinsons New Zealand received a donation from the J R McKenzie Trust, some of which was used to assist them to undertake a review of whether their publications and materials were meeting the needs of those using them.

Among the many useful discoveries was the fact that demand for information on Parkinsons extends to a very wide range of people connected with an individual patient – around 10 people per person diagnosed with the condition!

Through the review process they also learned that many previous

publication choices had been driven by the needs of funders and that limited funding had led Parkinsons New Zealand to try to fit too much information into too few publications – attempting to inform many audiences at once.

Ally Clelland of Parkinsons New Zealand says, “This review has led to a more appropriate prioritising system with a longer term vision which we truly believe will be of sustainable long term benefit to people with Parkinsons, families and health professionals as well as making more efficient use of our resources”.

Involving people in decision-making

Birthright New Zealand

This year Birthright New Zealand has concentrated on getting branch staff and volunteers involved in the work of the National Executive and National Office. Informal 'get togethers' were arranged around the country allowing people to discuss issues relevant to them and providing opportunities for them to contribute to decision-making at various levels.

"We've learned that they appreciate getting together with people in similar situations as themselves and that if you include people in debate

and decision-making they want to belong!", says Marian Cadman, Manager of the Birthright National Office.

Birthright has also discovered that people are enthused and excited about plans and work at all levels in the organisation. The informal meetings have led to more people expressing an interest in attending Regional Meetings and Conferences and the Annual General Meeting. It's also allowed them to more easily attract new members to the National Executive.



Leveraging grants

Habitat for Humanity

Last year the J R McKenzie provided funding to Habitat for Humanity to help them purchase building tools that are made available for Habitat building events nationwide. Working closely with suppliers and manufacturers, Habitat was able to make their funding go further.

Grant Cathro, Executive Director of Habitat for Humanity comments, "We learned the value of leveraging

grants like this at all levels. Rather than simply going in and purchasing tools we were able to go to the manufacturers and ask them for further discounts and in some cases donations, so that in effect we were able to buy tools to a much higher value than what the original grant was for. The original grant allowed us to have the seed money to undertake this leveraging".



The value of representation

REK Centre Trust

Funding from the J R McKenzie Trust helped the REK Centre Trust in Palmerston North to develop a programme of quality and interest for its disabled clients.

Of most importance to the REK Centre in its early days, was to set up a committee which was truly representative of its client base. They found this very worthwhile, and although it sometimes takes longer to get things done, there is a clear sense of ownership by the clients –

many of whom would otherwise not be involved in the service.

The REK Centre has grown tremendously in a very short space of time, and as Isla Prenter from REK points out "In the establishment of any new organisation there is so much to learn, and learn very quickly!. With hindsight we would not try to achieve everything at once. We would not try to reach out to as many people before we were sure we had sufficient staff, volunteers and finance to cater fully for their needs".



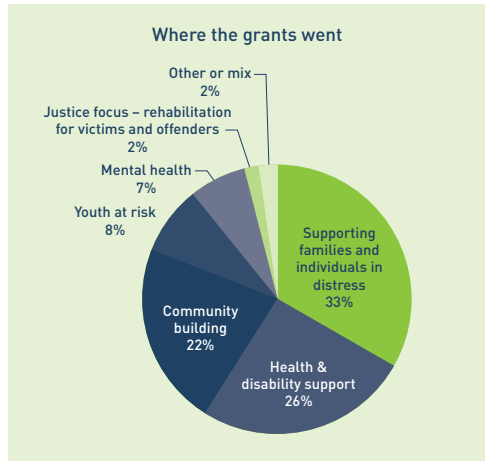
Financial report

for the year ending 31 March 2004

Grants this year totalled \$2.99 million – an increase from \$2.71 million in the previous year.

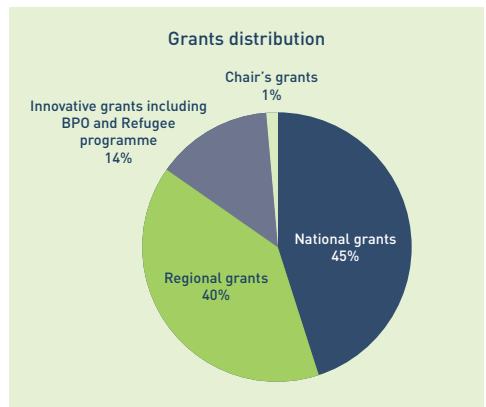
There were 751 applications and 570 grants. Grants to regional organisations averaged \$3,000, and those to national organisations \$13,000. Grants ranged in size from \$200 to \$180,000 for the J R McKenzie Youth Education Fund.

The Trust made grants to organisations assisting a wide range of people:



Three quarters of grants assisted with core operating costs, including salaries, rent, volunteer costs, etc. Organisations working specifically for and with Maori received 3.2% of the amount, Pacific Island groups 3.3%, and 7.2% went to groups working specifically with other ethnic communities including refugees. Thirty-two percent of funds went to projects focused on children and youth, but only 2% went towards senior citizens.

Grants were made to national and regional organisations, as well as to projects supported for their innovative focus:



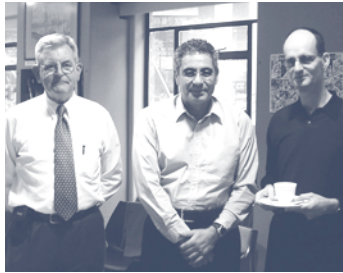
Just under a quarter of all applicant groups were making their first application to the Trust. Most of these organisations were less than two years old.

Expenditure on programme development and administration for the year totalled \$276,000.

The balance sheet shows Total Trust Funds of just under \$12 million. The market value of these funds was approximately \$49 million.

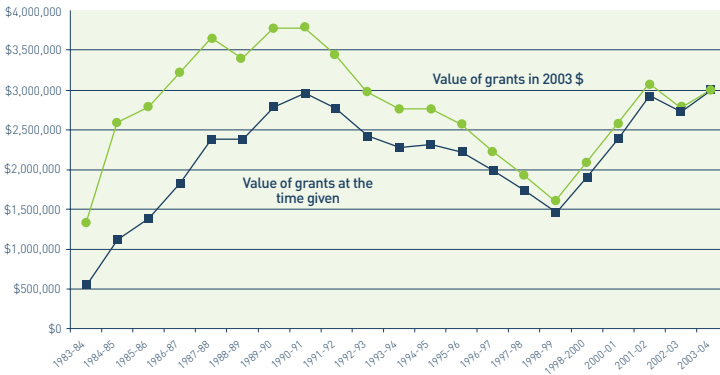
A full set of audited accounts is available from the office.

The amount the Trust has been able to give in grants has fluctuated over the last two decades:



VALUE OF GRANTS 1983–2003

Actual and adjusted to 2003 value (using Consumer Price Index)



Grants Made 2004 – 2005

Grants made so far in the year ending 31 March 2005

NATIONAL ORGANISATIONS

Action for Children and Youth Aotearoa ACYA	\$16,320
ADHD Association Inc	\$15,000
Age Concern New Zealand Inc	\$10,000
Agender New Zealand Inc	\$15,000
Allergy New Zealand	\$10,000
Alzheimers Society NZ Inc	\$15,000
Amputees Federation of NZ	\$5,000
ANGOA Association of Non Gov't Org'ns of Aotearoa	\$4,360
Apaarangi Tautoko Auahi Kore - ATAK	\$15,000
Arachnoiditis Sufferers Action & Monitoring Society	\$3,300
Arthritis Foundation of NZ	\$7,000
Arts Access Aotearoa Charitable Trust	\$10,000
Associated NZ Myalgic Encephalopathy Society ANZMES	\$5,000
Asthma and Respiratory Foundation of NZ	\$10,000
Autism New Zealand Inc	\$10,000
Back-up New Zealand	\$10,000
Barrier Free NZ Trust	\$6,000
Birthingright New Zealand Inc	\$15,000
Body Positive Incorporated	\$10,000
Camp Quality New Zealand Inc	\$10,000
Child Abuse Prevention Services NZ - CAPS	\$20,000
Child Poverty Action Group	\$34,000
Celiac Society of New Zealand Incorporated	\$5,700
CPS Training -Institute For Child Protection Studies	\$10,000
Cystic Fibrosis Association of New Zealand	\$5,000
Deaf Association of New Zealand	\$15,000
Diabetes NZ Inc	\$10,000
Disabled Persons Assembly New Zealand - DPA	\$10,000
Dyspraxia Support Group of NZ	\$7,500
Epilepsy Association of NZ Inc	\$15,000
EPOCH New Zealand	\$10,000
F.A.G.A.S.A. Inc	\$9,615
Family Planning Association of New Zealand Inc	\$10,000
Federation Of New Zealand Ostomy Societies	\$7,500
Fetal Alcohol Support Trust	\$20,000
Fragile X Trust (NZ)	\$3,000
Gastric Reflux Support Network NZ	\$1,000
GenderBridge Incorporated	\$2,550
Gifted Childrens Advancement Charitable Trust	\$5,000
Grandparents Raising Grandchildren Trust	\$10,000
GROW New Zealand Inc	\$13,050
Guillain Barre Syndrome Support Group NZ Trust	\$2,000
Hearing Association Incorporated	\$15,000
Hospice New Zealand	\$30,000
Howard League for Penal Reform Canterbury NZ Inc	\$10,000
Injury Prevention Network of Aotearoa New Zealand	\$5,000
J R McKenzie Youth Education Fund	\$160,000
Janus Looking Backward - Looking Forward Trust	\$10,000
Kahunui Trust	\$15,311
Kauri Trust	\$20,000
KEEA Trust	\$8,000
Kidney Kids of NZ Support Group Inc	\$13,750
Kotare Educational Trust	\$20,000
Lifeline New Zealand	\$20,000

Literacy Aotearoa Inc	\$20,000
Lysosomal Diseases New Zealand	\$2,500
Multiple Sclerosis Society of NZ Inc	\$15,000
Muscular Dystrophy Association of NZ	\$8,000
National Alternative Education Body	\$14,000
National Association for OSCAR	\$10,000
National Association of ESOL Home Tutor Schemes	\$20,000
National Collective of Independent Women's Refuges	\$20,000
National Foundation for The Deaf	\$15,000
National Network of Stopping Violence Services	\$10,000
New Zealand Family and Foster Care Federation Inc	\$1,800
New Zealand Sign Language Tutors Association	\$10,000
NZ Association of Citizens Advice Bureaux	\$15,000
NZ Council of Christian Social Services	\$25,000
NZ Council of Social Services	\$12,000
NZ Down Syndrome Association	\$20,000
NZ Endometriosis Foundation Inc	\$17,000
NZ Federation of Disability Information Centres	\$25,000
NZ Federation of Family Budgeting Services	\$20,000
NZ Federation of Prisoners' Aid & Rehabilitation Soc	\$15,000
NZ Federation of Vocational & Support Services VASS	\$4,000
NZ Federation of Voluntary Welfare Organisations	\$15,000
NZ Manic Depressive Support Trust - Balance	\$10,000
NZ Organisation for Rare Diseases - NZORD	\$10,000
Osteoporosis New Zealand Incorporated	\$5,000
Pacific Foundation New Zealand	\$25,000
Parent To Parent NZ Inc	\$17,000
Parents Centres New Zealand Inc	\$15,000
Parkinsonism Society of New Zealand	\$15,000
People First New Zealand	\$10,000
Philanthropy New Zealand	\$15,000
Platform Incorporated	\$15,000
Post Polio Support Society NZ Inc	\$10,000
Public Health Association of New Zealand	\$13,000
Refugee Council of New Zealand Inc	\$5,000
RMS Refugee Resettlement	\$25,000
Schizophrenia Fellowship (NZ) Inc	\$7,500
Scripture Union In New Zealand Inc	\$8,870
Stroke Foundation of New Zealand	\$10,000
Supergrans Aotearoa Inc	\$15,000
Te Kahui Atawhai o te Motu	\$20,000
Te Ora Hou Aotearoa	\$12,850
Tongan National Council in Aotearoa	\$5,000
Youthline Auckland Charitable Trust	\$10,000
YWCA of Aotearoa New Zealand	\$12,000



REGIONAL GRANTS

These are listed by the Rotary District in which the groups operate.

9910 - Auckland North

(North of the harbour bridge, and west Auckland)

Adventure Specialties Trust	\$2,000
Aotea Family Support Group Charitable Trust	\$2,000
C.A.R.E. Waitakere Trust	\$3,000
Children & Young People Disability Support Trust	\$2,000
Crosstown Camping Program	\$2,000
De Paul House	\$2,000
Depot Community Artspace	\$2,000
Developing Abilities Centre Charitable Trust	\$2,500
Devonport Community House Inc	\$2,000
Disability Information Inc	\$962
Dress for Success (Northland) Inc	\$2,000
Fish Factory Youth	\$2,436
Friendship Centre Trust	\$2,500
Glen Eden Community House Inc	\$2,000
Glenfield Community Project	\$3,000
Helensville Women's Centre	\$2,000
Hibiscus Coast Community House Inc	\$2,000
Hibiscus Coast Parent Aid	\$2,000
Hokianga Hospital Auxiliary Inc	\$3,000
Homebuilders Community Services	\$2,800
Homebuilders Family Support North Rodney Inc	\$2,000
Impact Alternative Education	\$2,000
Inner City Women's Group	\$3,000
Kaitia Community House Society Inc	\$2,500
Kawakawa Community Trust	\$2,500
Maungaturoto Care & Share Family Support Group Trust	\$2,000
Midway in Northland Day Services Trust MINDS	\$2,500
New Dawn Partnership Incorporated	\$3,000
North Shore Civilian Maimed Assoc Inc	\$2,500
North Shore Community Health Network - Raeburn House	\$2,000
North Shore Womens Centre	\$2,000
Northland Urban Rural Mission	\$2,500
One Double Five Whare Roopu Community House	\$2,000
Parent Aid Kaipara Inc	\$1,690
Parent Aid Waitakere Inc	\$2,000
Parent Port Inc	\$3,000
Parent Port North Inc	\$2,500
Ranui Baptist Community Trust	\$2,500
Rubicon Youth Alcohol & Drug Support Services	\$6,000
Safer Families Foundation	\$2,000
Safer Families Violence Prevention Network	\$2,000
Supervised Access Centres (NZ) Trust	\$3,000
Te Plataata Trust	\$2,000
Te Ukaipo - Mercy Initiative for Neighbourhoods Kids	\$3,000
Te Whare Rangimarie Trust	\$1,500
Teenadders Inc	\$2,000
The Rosa Counselling Trust	\$2,000
Toys for Special Children Charitable Trust	\$3,000
Waitakere City Wardens Inc	\$2,500

Wellsford/Warkworth Women's Resource Centre	\$1,000
Western Refuge Society Inc	\$2,000
Whangarei Anglican Care Trust	\$2,000
Whau Valley Whaioara Support Trust	\$2,690

9920 - Auckland

(Central and South Auckland)

Action Education Inc	\$3,000
Anglican Diocese of Auckland - AMAZE	\$3,000
Arahura Charitable Trust	\$3,000
Auckland District Kidney Society Inc	\$5,000
Auckland Down Syndrome Education Unit	\$2,500
Auckland East Chinese Society Inc	\$2,000
Auckland Family Counselling & Psychotherapy	\$3,000
Auckland Gay/Lesbian Welfare Group	\$2,500
Auckland Latin American Community Inc	\$6,000
Auckland Refugee Council Inc	\$5,000
Auckland Sexual Abuse HELP Foundation	\$4,000
Auckland Women's Centre Incorporated	\$7,000
Auckland Women's Health Council	\$1,500
Catholic Family & Community Services	\$3,000
Chinese New Settlers Services Trust	\$5,000
Christian Leadership Training Unit	\$3,000
Coalition for Disability Services Trust	\$3,300
Communicare CMA (Auckland)	\$5,000
Counselling Services Centre	\$2,494
Crossroads Clubhouse	\$1,307
Diversity Trust	\$7,000
Eastgate Community Trust	\$7,000
Eating Difficulties Education Network EDEN	\$5,000
Essentially Men Education Trust	\$4,000
Glen Innes Catholic Church - St Pius X Parish	\$5,000
Glen Innes Family Centre Charitable Trust	\$5,000
Home And Family Society	\$7,000
House of Bethany - Sisters of St Joseph	\$3,000
Life Centre Trust	\$3,000
Maternity Services Consumer Council	\$3,462
Methodist Mission Northern	\$3,000
Migrants Support Services Inc	\$4,500
Monte Cecilia House Trust	\$5,000
National Women's Parent Care Inc	\$2,000
PACT - Papatoetoe Adolescent Christian Trust	\$4,000
Pakuranga Counselling Centre	\$2,000
Panacea Arts Charitable Trust	\$3,000
Papakura Christian Services Trust	\$2,000
Papakura Marae Society	\$3,000
Parent Aid Central West Auckland Inc	\$3,000
Pillars (Auckland) Inc	\$4,000
Rape Crisis (Auckland) Inc	\$6,000
Recreate - Auckland	\$7,000
Resources to Schools Charitable Trust	\$4,000
Roskill Union and Community Health	\$3,000
SAFE Network Incorporated	\$6,000
Sailability NZ	\$3,000
Seasons - Growing through Grief	\$4,000



SENZ Charitable Trust	\$7,000
St. Columba Anglican Community Church & Centre	\$4,000
St. George's Anglican Church - Counselling Service	\$5,000
StarJam Charitable Trust	\$3,000
Tafaota Trust Manurewa	\$2,000
Tamaki Pathways Trust	\$5,000
Te Iwi O Ngati Kahu Trust	\$2,000
Te Oranga Kaumatua Kuia Disability Support Service	\$3,000
Te Unga Waka Social Services	\$4,000
Te Waipuna Puawai Mercy Oasis Ltd	\$5,000
Te Whare Marama O Mangere	\$4,500
Tenants Protection Association Inc	\$2,000
Training and Budget Services Inc	\$7,000
Tuia Youth Services Trust	\$2,000
TYLA Trust	\$8,000
Wings Trust Franklin	\$2,000
Young and Emerging Artists	\$1,000

9930 - Hamilton

(Coromandel to Hawkes Bay)

Accident Injury Support Group (HB) Inc	\$4,000
Arts For Health Community Trust	\$2,000
Bay of Plenty Therapy Foundation Inc	\$3,300
Beachaven Community House	\$3,000
Bethel House - Liberty Ministries Trust	\$2,000
Brainwaves Association Tauranga Support Group Inc	\$3,000
C.A.R.E. Services Trust	\$2,000
Catholic Diocese Of Hamilton - Youth Ministry	\$2,000
Catholic Family Support Services	\$3,000
Centre for Creative Therapies NZ	\$2,020
CHB Support & Counselling Services	\$2,500
Children In Hospital Liaison Group	\$1,300
Choices	\$2,000
Colville Community Health Trust	\$5,000
Cool Bananas Youthwork Trust	\$3,000
Co-operating Parish Of Piopio Aria and Mokau	\$3,000
Cornerstone Trust Inc	\$2,000
Coromandel Community Organic Gardens	\$1,000
Coromandel Friendship Club Inc	\$3,000
Coromandel Youth Support Association	\$3,000
Crosslight Trust	\$2,000
Disability Resource Centre HB Inc	\$3,000
Disha - Bay of Plenty Ethnic Women's Support Group	\$5,000
Earth Gardens	\$2,000
Eastern Hastings Community Youth Worker Ass Inc	\$4,000
Faith Family Fellowship Te Whanau Whakapono	\$4,000
Family and Caregiver Support	\$3,000
Fordlands Community Assoc	\$5,000
Frankton & Dinsdale Rauawaawa Charitable Trust	\$5,000
Friends of Carruth	\$2,000
Gateway Community Centre	\$2,500
Genesis Trust Hawkes Bay Inc	\$2,000
Glenview Community Activities Centre Inc	\$1,500
Grief Support Services Inc	\$2,500
Growth Through Moderation Society	\$2,000

H.Y.P.E. Unlimited Charitable Trust	\$5,625
Hamilton Abuse Intervention Project	\$4,500
Hamilton Methodist Social Services	\$2,500
Hauraki Help Inc	\$2,000
Hauraki Kids Society Inc	\$2,000
Hauraki Women's Refuge Inc	\$3,000
Hawkes Bay Deaf Club	\$1,000
Heretaunga Women's Centre	\$2,500
Kainga Aroha Society Inc	\$3,000
Katikati Community Resource Centre	\$3,000
Kauaeranga Valley Christian Camp	\$1,500
Lake Taupo Christian Camp	\$3,000
Link House Agency	\$2,500
M.I.L.E. Community Trust Inc	\$2,000
Manaia Marae Committee	\$1,000
Matamata Community Resource Trust	\$2,000
McKenzie Centre Trust	\$5,000
ME/CFS Charitable Trust Rotorua	\$5,600
Mokoia Community Association	\$3,600
Morrinsville Community House Inc	\$2,000
Napier Community Foodbank Trust	\$2,000
Napier Family Centre Inc	\$2,000
Newstape Trust Inc	\$1,350
Ngaruawahia Community Care & Crisis Support Trust	\$4,000
North King Country Family Support Programme	\$2,500
Omokoroa Community Support Trust	\$3,000
Otorohanga Counselling Services	\$2,000
Paeroa Community Support Trust	\$3,000
Parentline Inc	\$3,500
Paul Hunter Centre Inc	\$2,500
People Relying On People	\$1,500
Presbyterian Support Services (East Coast)	\$2,500
Raglan Community House Soc Inc	\$3,000
Raglan Maori Wardens Charitable Trust	\$3,000
Rostrevor House Inc	\$3,000
Rotorua Women's Support Network	\$2,000
Samaritans Of Tauranga Inc	\$2,500
Sexual Abuse Centre (Rotorua) Inc	\$1,000
South East Kirikiriroa Community Assoc Inc	\$3,000
St Andrew's Youth Trust	\$2,000
Stepping Out Hauraki Inc	\$3,000
Sunshine Service Inc	\$3,000
Tairāwhiti Community Law Centre	\$3,000
Tairua Care & Friendship Club	\$2,110
Taumarunui Counselling Services Inc	\$3,000
Taumarunui Women's Health Clinic Trust Inc	\$4,000
Taupo Sexual Assault Counselling Service	\$2,000
Tauranga Help	\$3,000
Tauranga Ongoing Pain Support (Inc)	\$2,500
Te Ahi Kaa Training & Social Services Centre	\$5,000
Te Aranui Trust	\$5,000
Te Aroha Springs Community Trust	\$3,000
Te Awamutu Gracelands Trust	\$1,000
Te Awamutu Women's Centre Inc	\$2,000
Te Hunga Manaaki O Te Puke	\$2,500
Te Korowai Awhina Trust	\$3,000



Te Puke Community Care Trust	\$2,500
Te Roopu A Iwi Trust	\$3,000
Te Roopu Whakawhanau Charitable Trust	\$3,000
Te Whare Iwi Inc - Whangamata Resource Centre	\$5,800
Thames Baptist Community Ministries - Ebenezer	\$3,000
Thames Interchurch Council Foodbank	\$1,000
Thames Koinonia Trust Inc	\$2,000
Thames Women's Centre Trust	\$2,500
The Hub Youth Charitable Trust	\$3,420
Tirohia te Kopere Trust	\$2,500
Tokomaru Bay Community Group Charitable Trust	\$3,000
Tokoroa Senior Citizens And Welfare Centre	\$3,000
True Colours Charitable Trust	\$3,000
Volunteering Waikato	\$3,500
Waihi Community Resource Centre	\$2,000
Waikato Anglican Social Services Trust Board	\$2,000
Waikato Ethnic Council Inc	\$3,000
Waipa Youth and Whanau Inc	\$2,000
Wairoa Youth Services Trust	\$2,000
Western Community Association Inc	\$3,000
Whakatane Bluelight Ventures Kickstart Programme	\$4,100
Whangamata MOPS	\$600
Whitianga Community Services Trust	\$2,000

9940 - Wellington

(Taranaki to Wellington)

Abbat Trust	\$2,500
Across - Te Kotahitanga O Te Wairua	\$2,000
Agape Budgeting Service Ltd	\$2,500
Awhina Wahine Wgtn Inc	\$2,000
Camellia House Trust	\$2,000
Catacombs Incorporated	\$2,500
Central Region Advocacy Service	\$2,000
Challenge 2000	\$2,500
Choice R&R operating as Choice Holidays	\$5,000
Community Budgeting Trust (Wairarapa) Inc	\$2,000
Contact Incorporated	\$864
Counselling & Education Centre (Marton) Inc	\$5,000
Cross Roads Christian Community Trust	\$2,500
Dannevirke Family Services Inc	\$2,500
Downtown Community Ministry	\$5,000
Eastbourne Youth Worker Trust	\$1,500
Emerge Supported Employment Trust	\$2,000
Epuni Community Christian Trust	\$2,500
Family Support Services Whanganui Trust	\$2,500
Focus Trust	\$3,500
Friends Who Care Incorporated	\$2,000
Hawera Rape Crisis	\$2,500
Huntington's Disease Assn (Wellington) Inc	\$2,500
Hutt Language Group Inc	\$1,500
Hutt Rape Counselling Network Inc	\$2,500
Hutt Valley Benefit Education Service Trust	\$2,000
Kapiti Family Centre Inc	\$2,500
Kapiti Women's Health Collective Inc	\$2,500
Karori Community Bus Inc	\$1,000

Kimihia Rangatahi	\$4,500
King Street Artworks	\$4,000
KITES	\$1,500
Lavea'i Trust Inc	\$2,500
Levin & District Befrienders Inc	\$624
Levin Clothing Bank	\$2,000
Locus Housing	\$1,500
Lower Hutt Women's Centre	\$2,500
Mana Community Enterprises Inc	\$3,500
Manawatu Pregnancy Centre Trust	\$2,500
Manawatu Rural Support Service	\$700
Manchester House Social Service Inc	\$3,000
Maota Samoa Hutt Valley Charitable Trust	\$3,000
MASH (Modern Approach To Social Health) Inc	\$2,500
Masterton Christian Child Care Programme Inc	\$1,000
Mature Employment Support Agency	\$3,000
Mature Employment Support Agency Manawatu	\$2,000
Mauri Ora Charitable Trust	\$2,000
Methodist Social Service Centre	\$3,000
New Plymouth Community Foodbank Trust	\$1,500
New Plymouth Womens Centre Inc	\$2,500
New Settler Service (Porirua) Inc	\$4,500
Otaki Women's Health Group Inc	\$2,500
Pablos Art Studio Inc	\$3,000
PAC Resources	\$2,500
Pacific Island Cultural Social Services Trust	\$4,500
Pacific Island Family Services Trust	\$3,000
Porirua Creative Space Charitable Trust	\$2,000
Port Bowen Trust	\$3,000
Post and Ante-Natal Distress Support Group Inc	\$2,190
Presbyterian Support Services (Central)	\$2,500
Samaritans Of Horowhenua	\$750
Samaritans of Wellington	\$2,500
Sexual Abuse Healing Centre Wanganui Inc	\$2,500
South Taranaki Women's Centre	\$2,500
St Johns Foodbank - Levin	\$500
START Taranaki	\$3,000
Street Youth Ministries Trust	\$2,500
Suzanne Aubert Compassion Centre	\$2,500
SWINGS (Supporting Women in New Growth Skills)	\$3,000
Taihape & District Medical Trust	\$2,500
Taihape Older And Bolder Collective	\$700
Take 5 Te Whare Marama Inc	\$2,500
Taranaki Enterprises Inc	\$2,000
Taranaki Multiple Sclerosis Soc Inc	\$4,000
Taranaki SAFER Centre	\$2,000
Taranua Community Youth Worker Project Inc	\$2,000
Te Akamata Anga Ou	\$4,500
Te Aroha Noa Community Services Trust	\$3,000
Te Hiiri Marae Trust	\$2,000
Te Taura Here O Ngati Porou ki Poneke	\$2,500
Titahi Weston Trust	\$2,000
Upper Hutt Women's Centre Inc	\$2,500
Vincent's Art Workshop Inc	\$3,000
Wai Ora Christian Community Trust	\$3,000
Waimarino Aroha Trust	\$3,000



Wainuiomata Community Centre	\$1,500
Wairarapa Stars Trust	\$2,000
Wairarapa Women's Centre	\$3,000
Wellington City Mission (Anglican) Trust Board	\$2,500
Wellington Early Intervention Trust	\$2,000
Wellington Gay Welfare Group Inc	\$2,500
Wellington Hospital Ladies Auxiliary	\$1,500
Wellington Housing Trust	\$2,000
Wellington Independent Rape Crisis Inc	\$2,500
Wellington Night Shelter Trust	\$2,500
Wellington Stop Inc	\$2,500
Wellington Women's Health Collective	\$3,000
Wesley Community Action	\$2,000
Whanau Family Support Services Trust	\$755
Whanganui Peoples Centre	\$2,500

9970 - Christchurch

(Nelson to Canterbury)

Agape Trust	\$2,570
Agoraphobic Support Group	\$2,900
Ambrosia Empowerment Trust	\$2,500
Autlink Foundation Inc	\$2,500
Belfast Community Network Inc	\$3,200
Beneficiaries & Unwaged Workers Trust BUWT	\$2,500
Bread Of Life Trust	\$2,500
Christchurch Children's Holiday Camps Trust	\$3,000
Christchurch Peoples Resource Centre/Beneficiary Adv	\$2,500
Christchurch Tongan Community Association	\$1,749
Christian Brothers Edmund Rice Community	\$3,500
Churches Hospital Support Trust	\$2,000
Community Art Works	\$3,500
Eating Awareness Team	\$3,000
Eleazar Family Support Trust	\$2,000
Familial Trust	\$3,000
Family Focus Services	\$2,000
Father and Child Trust	\$2,500
Home And Family Society Christchurch Inc	\$2,500
Home Made Partnerships Trust - ChCh Supergrans	\$2,684
House 44 South East Stoke	\$2,000
Ka Wahine Ki Otautahi Trust	\$1,000
Lyttelton Harbour Basin Youth Council	\$5,000
Mothers Supporting Mothers	\$2,500
Nelson Rape and Sexual Abuse Network	\$1,886
Nelson Womens Support Inc	\$2,000
New Brighton Community Social Support Trust	\$1,944
Northern Buller Communities Society Inc	\$2,500
OSCAR Network in Christchurch Inc	\$2,000
Our Youth Our Community Charitable Trust	\$2,500
Oxford Community Trust	\$1,000
Pain Action in New Zealand Inc	\$2,500
Post Natal Depression Support Network (Nelson) Inc	\$2,000
Potikohua Charitable Trust	\$2,500
Refugee Resettlement Support	\$2,500
Rowley Resource Centre	\$2,500
Seabrook McKenzie Trust	\$5,975

Sexual Abuse Survivors Trust	\$2,000
Solo Women As Parents Inc	\$2,500
SPAN Charitable Trust	\$3,500
St John of God Waipuna Community Trust	\$912
START Inc	\$5,000
The Caroline Reid Charitable Foundation	\$1,000
The Hub (Youth and Community Facility Trust Inc)	\$3,500
Tranx Inc	\$2,000
Vision Employment Support Services Charitable Trust	\$2,500
Volunteering Canterbury	\$2,500
West Coast Independent Living Centre	\$1,136
West Coast Recovery Drop In Centre Trust	\$2,500
Women's Centre Inc	\$2,500
Womens Health Information Centre (THAW)	\$2,500

9980 - Dunedin

(South Canterbury to Southland)

Alpine Community Development Trust	\$2,500
Arai te Uru Kokiri Centre Inc	\$1,500
Aroha Ki Te Tamariki Trust - Mirror Project	\$2,000
Art Connections	\$3,000
Caroline House Inc Society	\$2,000
Central & Southern Autism Support Group	\$2,700
Centre Care Waimate Inc	\$3,500
Downie Stewart Foundation	\$2,500
Dunedin Community House Trust (Inc)	\$2,000
Dunedin Methodist Mission	\$3,500
Dunedin South Trust	\$2,000
Family Network Inc	\$3,500
House of Bethany Inc. Soc	\$1,100
M.E. Information & Support Service	\$1,500
Naphtali Activity Centre	\$2,000
Oamaru Combined Churches Health Support	\$750
Otago Employment Trust - Youth Works	\$2,000
Queenstown Lakes Family Centre	\$2,500
Remarkable People Trust	\$2,000
Robbie White Charitable Trust	\$3,500
Roslyn Baptist Ministry Charitable Trust	\$2,000
Sherwood Centre Charitable Trust	\$2,000
South Canterbury Violence Intervention	\$2,000
South Canterbury Women's Wellness Centre	\$3,000
South Centre Community House	\$4,000
South Otago Youth Trust	\$2,500
Southland Beneficiaries & Community Rights Centre	\$2,000
Southland Cot Death Society Trust	\$3,500
Southpoint Counselling Service	\$1,000
Te Hou Ora Otepoti Inc	\$3,000
Te Runanga o Otakou	\$2,000
Temuka Community Care Trust	\$3,000
Teviot Valley Community Christian Trust	\$1,000
The Bargain Barn Dunedin Charitable Trust	\$2,000
The Counselling Centre Anglican Care South Canterbury	\$2,000
Upper Clutha Women's Support Group	\$750
Waiareka Youth and Ministry Trust	\$2,500
Work Opportunities Trust	\$3,000

INNOVATIVE FUND

Aotea Family Support Group Charitable Trust	\$10,000
Books for Babes Trust	\$1,000
Domestic Violence Centre	\$10,000
Every Child Counts	\$35,000
Hoe Mua Breakthrough Trust	\$18,000
Kauri Coast Development Board	\$5,000
Leadership New Zealand Trust	\$15,000
Mental Health Foundation of NZ	\$20,000
Miriam Centre	\$12,000
National Collective of Independent Women's Refuges	\$33,800
New Plymouth District Safer Community Council	\$5,000
NZ Federation of Voluntary Welfare Organisations	\$10,000
PEETO Inter-Cultural Development Trust	\$10,000
Project HIEDI	\$18,000
Tairāwhiti REAP	\$8,000
Waikato Family Centre Trust	\$10,716
Wellington Council of Social Services	\$5,000
Whangarei Youth One Stop Shop Charitable Trust	\$10,000

Building Pacific Organisations

(in conjunction with the Tindall Foundation)

Aitutaki Eヌua Society	\$6,000
Hoe Mua Breakthrough Trust	\$8,000
Lavea'i Trust Inc	\$4,100
Pacific Business Trust	\$20,000
Vasa Pasifika Creative Learning Trust	\$3,600
Wahine Malosi Charitable Trust	\$8,000

CHAIR'S FUND

Aotearoa Educators	\$500
Buller REAP	\$500
Canine Friends Pet Therapy Inc	\$1,000
Fathers and Families of Aotearoa Society	\$2,639
Health Action Trust	\$900
Leadership New Zealand Trust	\$500
ME/CFS Support Group (BoP) Inc	\$2,000
Niu Development Inc	\$2,021
Northland Craft Trust	\$1,000
Project X	\$2,000
Star Sign Café	\$500
Tairāwhiti Beneficiary Advocacy Trust Inc	\$2,000
UNICEF New Zealand	\$3,000
University of Auckland	\$1,500
Wool Ladies Trust	\$2,000

Total so far (560 grants)

\$2,823,457