



**J R MCKENZIE TRUST**

ESTABLISHED IN 1940

# ANNUAL REPORT 2009

Details of new funding strategy inside



*J R McKenzie (1876 – 1955) and Lady McKenzie*

## For more information...

- About applying for a grant
- Grant application forms
- Audited Accounts 2008-09
- Rangatira Limited Annual Report

Visit our website: [www.jrmckenzie.org.nz](http://www.jrmckenzie.org.nz)

### Or contact

Iain Hines, Alison Glen  
J R McKenzie Trust  
P O Box 10 006  
Wellington

Phone: (04) 472 8876

Email: [info@jrmckenzie.org.nz](mailto:info@jrmckenzie.org.nz)

This report was produced by Briar's Words and Design, and Central Media, Wellington;  
and printed by Graphic Press and Packaging, Levin.

Cover photo: Tyson Poutai learns to use a disk grinder in Springboard's Youth Impact programme.  
The steel he is preparing to weld will be used in Impact's garden for the young people's families.



# Introducing the JR McKenzie Trust



**J R MCKENZIE TRUST**

ESTABLISHED IN 1940

*Iti noa ana, he pito mata –*

*With care, a small kumara will produce a harvest.*



**Standing.** Left to right: Neville Caird (Dunedin), Patrick Cummings (Hamilton), Tricia Walbridge (Wellington), Lyn Holmes (Christchurch), David Vance (Wellington), Pania Ellison (Otaki), Warren Lindberg (Auckland), Eric Keys (Auckland), Charles Wilson (North Shore)

**Seated.** Radha Balakrishnan (Deputy Chair, Wellington), John McKenzie (Chair, Sydney), Alison Glen (Administrator), Iain Hines (Executive Director). **Absent.** Below: Darryn Russell (Dunedin) and Julia Carr (Wellington)



*The faces of the people who handle the funds that make a difference to the lives of disadvantaged New Zealanders and those with special needs – the J R McKenzie Trust Board.*

**The Trustees and staff here are the current stewards of the legacy of one of New Zealand's generous families – Sir John and Lady May McKenzie and their descendants.**

Each year the Trust distributes more than \$3 million to charitable community organisations working with Kiwis who are socially, developmentally or physically disadvantaged – with special emphasis on children, young people and those with disabilities.

Sir John McKenzie established the nationwide McKenzies chain of variety stores in 1910, and the J R McKenzie Trust in 1940. One third of the company's profits were distributed to the people of New Zealand. Sir John's son, Sir Roy McKenzie,

greatly increased the Trust's size and vigour, set up several other charities, and was a major figure in New Zealand philanthropy until his death in 2007. Roy and Lady Shirley's children, Peter and John McKenzie and Robyn Gibson, are Personal Trustees who hold the shares in the investment company Rangatira, the principal source of the Trust's income. John currently chairs the Trust.

The Trust Board comprises 13 volunteers, who are appointed in several ways:

- Two Trustees are appointed by the McKenzie family.
- Six Trustees are appointed by Rotary, one from each of New Zealand's Rotary Districts.

- One Trustee is appointed in conjunction with the NZ Law Society, and another in conjunction with the NZ Medical Association.
- Three Trustees are appointed by the Board itself.

The Deaf Development Fund makes grants to organisations and individuals that contribute to the development of the Deaf community. Other volunteers contribute to the current Trust programmes See [Here](#) and Te Kāwai Toro.

As a result of a major review over the last two years it is changing its focus and processes in 2010; there is more information about the changes in the middle pages of this report, and also on the website.



# Chair's Report 2009



Over the last two years the Board has listened, read, discussed and debated how the J R McKenzie Trust can add the greatest value to our communities. Throughout, we've thought many times of the people who have gone before us, especially my grandfather John and my father Roy.

We are the current stewards of the McKenzie legacy of generosity, and it is up to us to apply the spirit of that legacy to today's world. "Titiro whakamuri kia haere whakamua – Look back to go forward".

Looking back has reminded us that the "McKenzie spirit" includes "compassion for those who've had a bad run"; a pioneering willingness to "go ... where there is no path and leave a trail"; a focus on marginalised people and unpopular causes; and a deep interest in early intervention to make a better future, rather than patching up problems.

The Trust was once one of the largest, if not the largest, of non-government funders in New Zealand. Since then the supply of, and demand for, funding have both grown enormously. Today, the Trust contributes less than a quarter of one percent of all non-government funding going to community organisations. It is no longer a large enough funding source relative to overall supply and demand to spread itself so widely and still have much impact.

Yet the Trust's assets are more than the money: its reputation, its people and networks, and its freedom from the constraints faced by most other funders. There is still an important role for this organisation.

Our revised focus and process are described on pages 12 and 13 in this report. Here I'd like to discuss the reasons for our decisions, and their connection with our legacy.

## **Why social justice and inclusion?**

Our vision is a society which affords individuals and groups fair treatment and a fair share; and where the marginalised and less powerful in society participate significantly in decisions affecting their lives. We certainly don't believe we can make this happen on our own! – but believe we can contribute.

This vision is congruent with the "McKenzie spirit", and pitched at the more strategic level at which we now aim to contribute.

## **Why a move to fewer, larger grants?**

We believe that the Trust's characteristics make it best placed to contribute to *longer term* change – building a society where there are fewer people in dire straits, and less need for health and social services over time. Longer term change in a complex world requires longer term, and greater, commitment; and working in partnership with others.

## **Why a focus on disadvantaged children and their families?**

This has always been a core priority for the Trust. Statistics show that the gaps between the "haves" and the "have-nots", which increased significantly in the 1990s, have not substantially closed. We also know that children are disproportionately affected by poverty and disadvantage.

There is now very strong evidence that the early years of a child's life are crucial in determining their physical, mental and emotional wellbeing as an adult. Intervening early with children who have a high chance of not doing well, and their caregivers, is proven to be more effective than leaving things to later. This approach was strongly supported by Sir Roy.

## **Why a focus on Māori development?**

Conversely, this has only been a focus for the Trust in recent years; we are very much in "catch-up mode". Māori are the first people of our nation, and an increasing proportion of the

population; successful Māori development is a gain for all New Zealanders. Many health and social indicators show that Māori trail non-Māori; the disparities have closed in some areas but there is much still to do. The Trust is committed to an approach which supports Māori-led development, enabling "Māori to succeed as Māori".

## **Acknowledgements**

In 2009 the Trust's volunteers and staff have not only completed a major review and planning exercise, but continued "business as usual". It's been a busy year, and my sincere thanks go to everyone involved:

- Board members, especially Radha Balakrishnan our Deputy Chair
- the network of Rotarians and other volunteers around the country who have made small grants in their own communities; while the process is to change in 2010, we still look forward to Rotarians' input
- the volunteers who run with our other programmes – the Deaf Development Fund, See Here, Te Kāwai Toro
- the excellent consultants who have added such value to our efforts – I must single out Janet Digby, Project Manager for **See Here**
- the staff team of Alison and Iain, who have underpinned our work for another year
- the money generators – the people at Rangatira Limited and the Jayar Charitable Trust.

Beyond the Trust, we are again indebted to many friends who generously help us with information and advice. And perhaps most of all, we acknowledge the thousands of New Zealanders who give so much of themselves, paid or unpaid, to make life better for others.

I wish every reader a very successful year ahead.

*John McKenzie, Chair*



# Where the money goes ...

The work of the charitable organisations funded by the Trust



**Jolt Dance** received the Big 'A' Creative Space Award 2009 for "Duet", performed by Julia McKerrow and Melissa Fox (wheelchair). Jolt is a Christchurch mixed-ability company which celebrates difference and challenges perspectives about disability.



Dunedin **Studio 2** arts facilitator **Bridget Inder** says **Kelvin Maxwell** is an intuitive artist. "He just loves the experience of painting and the feel of sweeping the paint across the canvas with his brush. He's very confident about what he wants to do and the colours he uses." Studio 2 caters for people with intellectual and physical disability.



**Tim Hosken** is a long time artist and regular at Masterton's **King Street Artworks**. His main love is photography but then he paints the images he has captured. King Street Artworks, provides a creative space for people who use or have used mental health services, their whanau, friends and the community.

## National

ADHD Association Inc	\$15,000
Age Concern New Zealand Inc	\$15,000
Agender New Zealand Inc	\$25,000
Allergy New Zealand	\$20,000
Alzheimers Society NZ Inc	\$15,000
Amputees Federation of New Zealand Inc	\$7,500
Aphasia Association of New Zealand	\$10,000
Arts Access Aotearoa Charitable Trust	\$20,000
Associated NZ Myalgic Encephalopathy Society ANZMES	\$5,000
Association For Supported Employment in NZ	\$10,000
Body Positive Incorporated	\$15,000

Books in Prison Trust	\$10,700
Brainwave Trust	\$30,000
Child Poverty Action Group (NZ) Inc	\$20,000
Coalition of Refugee Services New Zealand	\$30,000
COmVoices	\$12,000
Cystic Fibrosis Association of New Zealand	\$10,000
DebRA New Zealand Trust	\$15,000
Diabetes New Zealand Inc	\$7,711
Disabled Persons Assembly New Zealand – DPA	\$7,500
Diversityworks Charitable Trust	\$10,000
Dyspraxia Support Group of N Z Inc	\$5,000
ECPAT New Zealand Inc	\$10,000

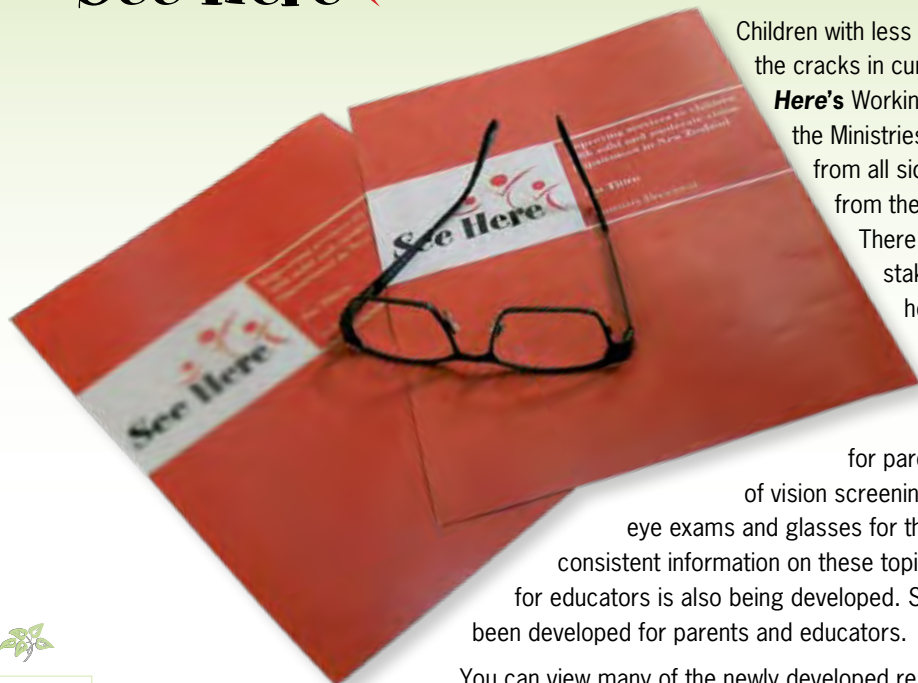
Employment Scholarship Charitable Trust	\$10,000
Endometriosis New Zealand	\$15,000
English Language Partners New Zealand	\$10,000
EPOCH New Zealand	\$15,000
F.A.G.A.S.A. Inc	\$10,000
Federation of Workers Educational Associations	\$3,000
FOE – Fight the Obesity Epidemic New Zealand	\$5,000
Gastric Reflux Support Network NZ	\$2,000
GenderBridge Incorporated	\$8,000
Gifted Childrens Advancement Charitable Trust	\$7,500
Grandparents Raising Grandchildren Trust	\$15,000
GROW New Zealand Inc	\$10,000



# Focusing on childhood vision impairment



**See Here** is a project set up by the JR McKenzie Trust to focus on the needs of the large numbers of children with less severe vision impairment, including those who need glasses to correct their vision problem. This is thought to include 10-20% of New Zealand children.



Children with less severe vision impairment are falling through the cracks in current health and education policy. **See Here's** Working Group have been liaising with officials from the Ministries of Health and Education, and politicians from all sides of the house to see recommendations from the **See Here** 2008 report implemented. There is significant support for the project from stakeholders including consumer groups and health and education organisations.

In addition to advocating for change in key areas, **See Here** has also been getting involved directly, by developing resources for parents to help them understand the limitations of vision screening, and what help is available to pay for eye exams and glasses for their children. This is the first time nationally consistent information on these topics has been given to families. Information for educators is also being developed. Sets of Frequently Asked Questions have also been developed for parents and educators.

You can view many of the newly developed resources by visiting [www.seehere.org.nz](http://www.seehere.org.nz)



*A year 5 student in school assembly at Dawson Primary School in South Auckland helps teach the rest of the school about rights and responsibilities in a programme run by **Human Right Communities in Education**.*



Heart Children NZ Inc	\$5,000	Lifeline New Zealand	\$20,000	NZ Council of Social Services	\$15,000
Hospice New Zealand	\$17,500	Multiple Sclerosis Society of NZ Inc	\$10,000	NZ Down Syndrome Association	\$10,000
Howard League for Penal Reform Canterbury NZ Inc	\$10,000	National Advisory Council of Samoa in Aotearoa	\$12,000	NZ Dystonia Patient Network Inc	\$5,000
Human Rights in Education Trust	\$25,000	National Collective of Independent Women's Refuges	\$15,000	NZ Federation of Disability Information Centres	\$10,000
Jigsaw Inc	\$15,000	National Collective of Rape Crisis	\$10,000	NZ Federation of Family Budgeting Services	\$20,000
Kauri Trust	\$10,000	National Foundation for the Deaf	\$15,000	NZ Federation of Voluntary Welfare Organisations	\$16,000
KEEA Trust	\$12,000	National Network of Stopping Violence Services	\$17,600	NZ Foundation For Conductive Education Inc	\$25,000
Kidney Kids of NZ Support Group Inc	\$10,010	National Youth Workers Network Aotearoa	\$18,600	NZ Prisoners' Aid and	\$25,000
Kidpower*Teenpower*Fullpower Trust	\$5,000	New Zealand Social and Civic Policy Institute	\$15,000	Osteoporosis New Zealand Incorporated	\$17,500
Kids Help Foundation Trust	\$10,000	NZ Aotearoa Adolescent Health & Development	\$13,000	OUTline New Zealand Inc	\$20,000
Kina Trust – Kith and Kin Whaanau Whaanui	\$10,000	NZ Association of Citizens Advice Bureaux	\$10,000	Parent To Parent NZ Inc	\$17,500
Leadership New Zealand Trust	\$10,000	NZ Council of Christian Social Services	\$15,000	Parents Centres New Zealand Inc	\$10,000





Right: A mother and child seek assistance.

Skylight supports children, young people and their families through change, loss and grief – whatever the cause. Left: a series of children's booklets funded by the J R McKenzie Trust to be used in Skylight's information and support pack. The titles reflect issues that research shows children to be most concerned about. Left bottom: inside one of the books. Centre: The centrepiece on the training room wall – a hope blackboard created by volunteers – illustrates Skylight's objective in the lives of those it supports.

Parents Inc	\$10,000	SANDS NZ	\$10,000	<b>Regional</b>	
Parents of Vision Impaired NZ Inc	\$13,000	Silver Ribbon Foundation	\$10,000	<b>North of the harbour bridge and west Auckland</b>	
Parkinsonism Society of New Zealand	\$10,000	Skylight – Children's Grief Centre Charitable Trust	\$5,000	A.I.M. (Adults in Motion)	\$1,500
Personal Advocacy Trust	\$10,000	Sosaiete Aoga Amata Samoa I Aotearoa	\$10,000	Ace Space Waitakere Learning Shop	\$1,500
Philanthropy New Zealand	\$15,000	Speld NZ Inc	\$15,000	Adventure Specialties Trust	\$2,464
PILLARS Inc	\$15,000	Supergrans Aotearoa Inc	\$7,500	Agape Homes Trust	\$1,500
Positive Women Inc	\$20,068	Tangata Whenua, Comm'y & Vol Sector Research Centre	\$17,000	C.A.R.E. Waitakere Trust	\$1,500
Prader-Willi Syndrome Assoc	\$2,570	Te Kahui Mana Ririki Trust	\$10,000	Culture Company Reading 4U Inc	\$1,200
Pregnancy Help Inc	\$10,000	The OSCAR Foundation	\$7,000	Dayspring Trust	\$2,440
Prison Fellowship of New Zealand	\$25,000	Tracks Trust	\$5,000	De Paul House	\$2,250
Refugee Services Aotearoa New Zealand	\$20,000	Youthline Charitable Trust	\$26,800	Dress for Success (Northland) Inc	\$2,000
Relationship Services Inc	\$12,500	J R McKenzie Youth Education Fund	\$221,130		







*Mervyn showing off his sweet corn.*

*The garden is tended by young people on **Springboard's** Impact programme who take the produce home to their families.*



*Bjorn Johanson, attired with safety gear, checks his saw before training begins. Impact teaches skills in horticulture and agriculture*

*“Springboard has taken our toughest kids and done something with them.”*

*David McLeod, Principal, Mabuangi College.*

**Springboard's Impact** programme in North Rodney helps unteachable and unmanageable 13 to 16 year old students overcome attitude and behaviour problems, teaches practical skills and principles and provides mentors. The outcome is kids with a growing sense of value and confidence who want to work and stay out of trouble. Impact assists young people into long-term employment and a positive future.

*School authorities, police and CYFs actively refer students to the programme which has worked with more than 70 young people with “excellent outcomes”.*

Helensville Women & Family Centre	\$2,250	Miriam Centre	\$10,000	Rosa Counselling Trust	\$1,500
Hibiscus Coast Community House Inc	\$2,250	New Dawn Partnership Incorporated	\$2,000	Special Needs Educational Resource Library	\$2,000
Hokianga Hospital Auxiliary Inc	\$2,000	North Shore Centres of Mutual Aid Inc	\$2,350	Springboard Community Works	\$2,000
Homebuilders Community Services Maungaturoto/Paparoa	\$1,500	North Shore Community Health Network – Raeburn House	\$2,250	Supervised Access Centres (NZ) Trust	\$2,000
Horses for Healing Charitable Trust	\$1,500	North Shore Housing Trust	\$2,000	Support for Sexually Abused Dargaville & Districts	\$2,000
Kumarani Productions Trust.	\$3,000	Northland Craft Trust	\$2,000	Tai Tokerau Emergency Housing Charitable Trust	\$1,175
Lifeway Youth Trust	\$1,500	One Double Five Whare Roopu Community House	\$2,250	Te Hana Community Development Charitable Trust	\$3,000
Linking Hands Inc	\$1,500	Parent Aid Kaipara Inc	\$2,250	Te Ukaipo Mercy Initiatives for Rangatahi Ltd	\$3,000
Man Alive Men's Centre	\$2,250	Parent Aid Waitakere Inc	\$2,000	Teenadders Inc	\$1,500
McLaren Park & Henderson South Community Initiative	\$3,000	Parent Port Inc	\$2,000	The Bluegoose Papermill Charitable Trust	\$2,000
Mercy Ministries Inc	\$6,000	Post Natal Distress Support Network Trust	\$2,000	Tornado Youth Community Trust Board	\$4,000
Midway in Northland Day Services Trust MINDS	\$1,500	Prescott Club	\$1,500	Violence Free Waitakere Inc	\$1,500



## Companionship for lonely people

*Below: The flowers say it all. The annual Spring Luncheon in Dunedin, organised by Jenny's Companionship Group.*

*"Our weekly group meetings of fun, games, jokes and afternoon tea is the only outing for some. We provide the hats and decorations and the guests do the rest."*



*Above: Games Day, organised by North Shore Centres of Mutual Aid. Once a week each of CMA's twelve centres offers a social outing in the heart of the local community for older and/or disabled people who are lonely or isolated. The aim is to provide companionship and activities for those who wish to attend.*

*"The chance to meet with others and just talk is often the highlight of their week."*

*"We make a living by what we get,  
we make a life by what we give."*

*Winston Churchill*

Waitakere Abuse and Trauma Counselling Service	\$1,500	Auckland Regional Migrant Services Charitable Trust	\$10,000	Eastgate Community Trust	\$3,000
Waitakere Health Link	\$2,000	Auckland Women 's Centre Incorporated	\$2,500	Eating Difficulties Education Network EDEN	\$5,000
Whangarei Migrant Centre Inc	\$2,250	Black Grace Trust	\$2,500	Essentially Men Education Trust	\$3,000
Whau Valley Whaiora Support Trust	\$2,500	Bo Ai She	\$3,000	Friendship House	\$3,000
WINGS Inc	\$4,000	Breast Cancer Support Inc	\$5,000	Garden to Table Trust	\$10,000
Women's Centre Waitakere City	\$2,000	Brothers in Arms Charitable Trust	\$16,200	Glen Innes Catholic Church – St Pius X Parish	\$3,000
Yes Ability Achievement Centre	\$2,000	Catholic Family & Community Services	\$3,000	Glen Innes Family Centre Charitable Trust	\$2,000
<b>Central and South Auckland</b>		Children's Bible Ministries	\$4,000	Home And Family Counselling Inc	\$5,000
Action Education Inc	\$2,500	Christian Community Care	\$4,000	Hope Unlimited Trust	\$2,000
Auckland Disability Law	\$4,000	Communicare CMA (Auckland)	\$3,000	House of Bethany – Sisters of St Joseph	\$2,000
Auckland District Kidney Society Inc	\$4,250	Counselling Services Centre	\$3,000	Huntingtons Disease Assn (Auckland) Inc	\$5,000
Auckland Latin American Community Inc – ALAC	\$3,000	Diversity Trust	\$3,000	Island Child Charitable Trust NZ	\$3,000



# Befriending Migrants and Refugees



*'Now, repeat aloud after me!' A Reading4U volunteer reads aloud with a migrant keen to learn English. Both volunteers and English language learners enjoy the one-to-one cultural exchange which takes place in Auckland public libraries. "Many participants have told us that they have learnt so much through the programme they are now recommending it to their family and friends who speak little or no English to help them integrate better into their local communities and life in New Zealand," says a volunteer.*



*Top: Russian Valentina and New Zealander Ciara say 'Hello' for the first time. Bottom: It's origami this week. Swings, an educational and social group for refugee and migrant women meets weekly in the Hutt Valley.*



Life Centre Trust – Streetreach Auckland	\$3,000	Pulse Youth Trust	\$3,000	Waiuku Family Support Network Inc	\$4,000
Masada Community Trust	\$4,000	Rape Prevention Education	\$4,000	Well Pacific Women and Family Service	\$3,000
Maungarei Community Christian Trust	\$4,000	Raukatauri Music Therapy Centre	\$3,000	Wings Trust Franklin	\$2,000
Mercy Missions Trust	\$4,000	River of Life Centre Trust	\$2,500	Women's Empowerment Foundation	\$12,000
Migrants Support Services Inc	\$5,000	Spark Studio (Panacea Arts)	\$9,000	WONS: Nursing, Education & Health Promotion Services	\$3,000
Monte Cecilia House Trust	\$3,500	St George's Anglican Church – Counselling Service	\$5,000	<b>Coromandel to Hawkes Bay</b>	
NZ Ethnic Employment & Education Youth	\$10,000	Te Oranga Kaumatua Kuia Disability Support Services	\$2,844	Accident Injury Support Group (HB) Inc	\$2,500
PACT – Papatoetoe Adolescent Christian Trust	\$3,000	Tenants Protection Association Inc	\$6,000	ADHD (Rotorua) Assn Inc	\$4,000
Pakuranga Counselling Centre	\$3,500	Toi Ora Live Arts Trust	\$3,000	Anglican Action	\$2,500
Papakura Support & Counselling Centre Inc	\$5,000	To'utupu Tonga Trust	\$3,000	Arts For Health Community Trust	\$3,000
Parent Aid Central West Auckland Inc	\$3,000	Training and Budget Services Inc	\$5,000	Atomic Events Centre Trust	\$2,500
Project Restore NZ Inc	\$5,000	Waiheke Budgeting Service	\$3,000	Awhina Whanau Services Inc	\$2,000



# Combatting stigma



*In the last 23 years more than 3000 people living in New Zealand have been diagnosed with HIV. More than 400 of them are women.\**

**Positive Women** provides information and support for women and families living with HIV and AIDS in NZ: an annual retreat offering therapies and relaxation, social events, a drop in centre and advice and referral services.

*The posters (left) and bus-advertising (top) were used in the group's destigmatisation campaign.*

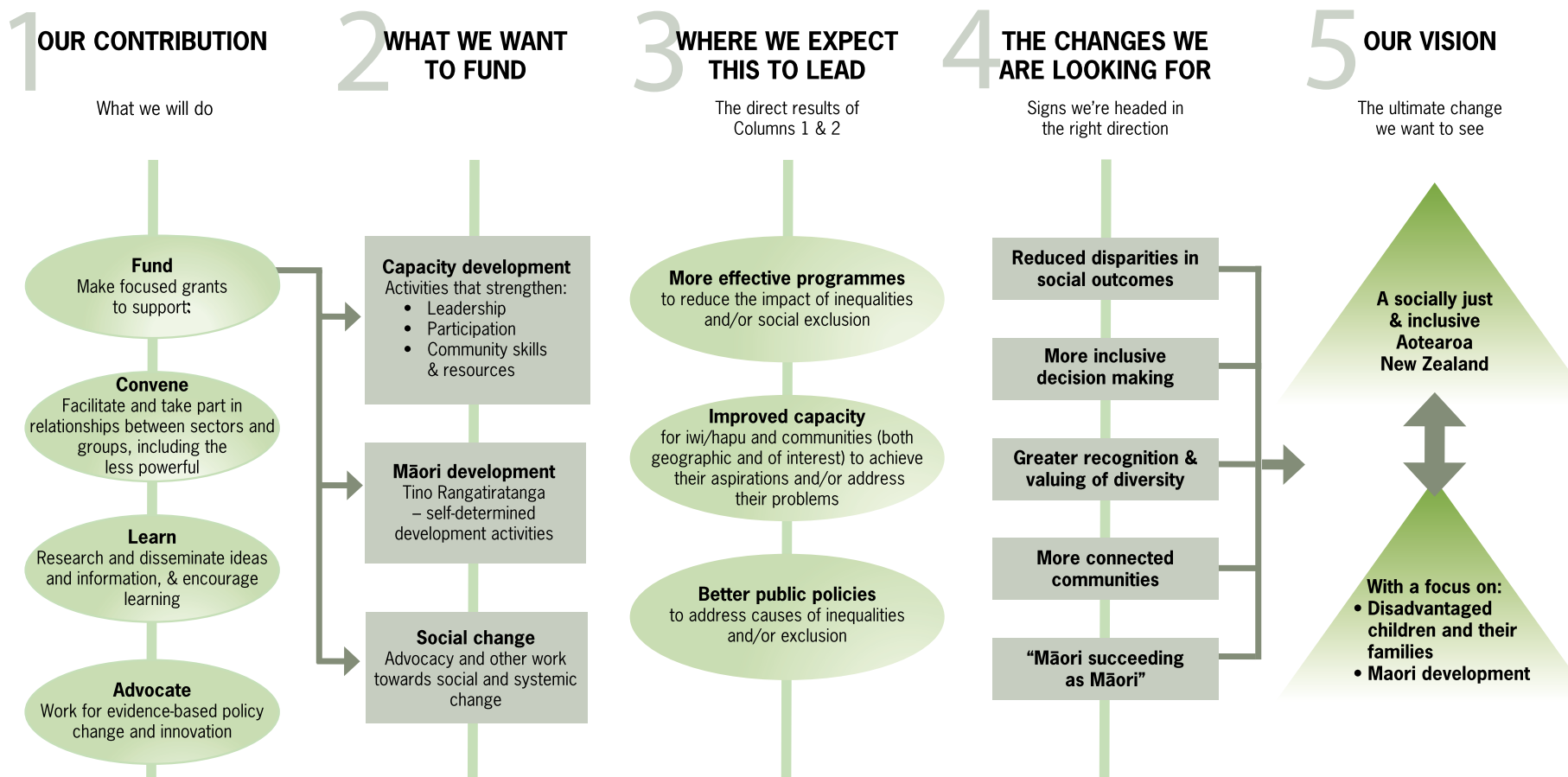
*\*AIDS Epidemiology Group, Dunedin*

*The website [www.positivewomen.co.nz](http://www.positivewomen.co.nz) (above) and the annual retreat are funded by J R McKenzie Trust and other providers.*

Bethel House – Liberty Ministries Trust	\$4,000	Coromandel Community Organic Gardens	\$2,000	Hastings Foodbank Trust	\$2,000
Breast Cancer Support Service Tauranga Trust	\$2,000	Crearts Inc	\$3,000	Hawkes Bay Restorative Justice	\$3,000
Bridge Pa Water Action Group	\$5,000	Crosslight Trust	\$3,000	Heretaunga Women's Centre Inc	\$3,000
Cambridge Community Agencies Trust	\$3,000	Eastern Bay Achievement Trust	\$2,000	Homes of Hope	\$3,000
Career Moves Trust	\$2,000	Eastern Bay Consumer Advisory Group	\$3,000	Kainga Aroha Society Inc	\$1,500
Catholic Diocese of Hamilton	\$1,500	Family Financial Solutions Trust	\$1,500	Kawerau Youth Care Centre Trust	\$3,000
Catholic Family Support Services	\$4,000	Finlay Park Adventure Camp	\$3,000	Kidz Need Dadz Inc	\$1,000
CHB Support & Counselling Services	\$2,500	Get Smart Tauranga Trust	\$3,000	Leg-Up Trust	\$2,000
Childrens Afterschool Programme Charitable Trust	\$1,500	Grief Support Services Inc	\$2,000	Link House Agency	\$3,500
Chrysalis Society Inc	\$5,000	Hamilton District Community Law Centre	\$3,500	Male Survivors of Sexual Abuse, Waikato	\$4,000
Community Waikato	\$3,000	Hamilton Ethnic Womens Centre – SHAMA	\$2,500	Matamata Community Resource Trust (Rail Side)	\$5,000
Congolese Community of Waikato Inc.	\$2,400	Hamilton Multicultural Services Trust	\$5,000	Matata Community Resource Centre	\$2,000



# Our new funding strategy 2010-14



ME/CFS Support Group (BoP) Inc	\$3,500	Pleroma Trust	\$3,000	Stepping Out Hauraki Inc	\$4,500
Morrinsville Community House Inc	\$3,000	Presbyterian Support East Coast	\$3,500	Sunshine Service Inc	\$2,000
Napier Community Foodbank Trust	\$3,000	Prison Care Ministries	\$1,049	Synergy (Cambridge) Trust	\$2,500
Napier Family Centre Inc	\$2,500	Purena Koa Rehua Youth Services	\$2,500	Taiohi Toa Trust	\$5,000
Napier Pilot City Trust	\$1,500	Raglan Community House Soc Inc	\$3,000	Tairua Care & Friendship Club Inc	\$2,192
Ngaruawahia Community Care & Crisis Support Trust	\$4,000	Raglan Maori Wardens Charitable Trust	\$2,000	Takapau Community Health Charitable Trust	\$2,000
Ngaruawahia Community House Inc	\$800	Refugee Orientation Centre Trust	\$3,000	Taumarunui Women's Health Clinic Trust Inc	\$3,500
North King Country Family Support Programme	\$3,000	Rosetown Community Services Trust	\$3,000	Tauranga Hearing Association	\$3,000
Paeroa Community Support Trust	\$2,000	Rostrevor House Inc	\$4,000	Tauranga Moana Restorative Justice Trust	\$3,000
Parentline Inc	\$5,000	Ryder Cheshire Foundation Waikato	\$3,000	Tauranga Ongoing Pain Support (Inc)	\$2,000
Paul Hunter Centre Inc	\$2,000	South East Kirikiriroa Community Asc Inc (Waimarie)	\$1,500	Te Aka Ora Charitable Trust	\$4,000
People Relying On People	\$3,000	South Waikato Artspace Trust	\$2,500	Te Hunga Manaaki O Te Puke	\$3,700



# Sharper focus to J R McKenzie grants – fewer, larger, longer

The Trust has a proud 70-year history in helping to build stronger communities. To make sure we continue to use our funds to achieve the most effective change for good that we can, we have undertaken a comprehensive review of how we give.

Our strategy for 2010 – 2014 is to focus all we do as a Trust, including our grant making, on working towards **a more socially just and inclusive Aotearoa New Zealand**. We would like to contribute to long term changes to systems or ways of doing things that will improve the prospects or participation of disadvantaged people in an ongoing way.

We want to ensure that our relatively small resources are part of “philanthropy which aims to change the circumstances that give rise to the need for philanthropy”. We want to help build a society where there are fewer people in dire straits.

We will shift away from making many small annual grants to making fewer, larger, multi-year grants. We will look for opportunities to build relationships with the organisations we support, and other ways alongside grants in which

to support their work. While our main focus is funding, we will continue to work towards our goal in a variety of other ways too.

## Focuses

The Trust has chosen two major areas of focus for the next 5 years:

- Disadvantaged children and their families; and
- Māori development.

Applications with a focus on other especially marginalised groups may also be considered.

## The application process from 2010

This will be a two-stage process:

The first stage is a brief Outline application to give us an idea of what groups do, and would like to achieve.

Some applicants will be invited to put in a Full application with more detail. We hope to visit all organisations that reach the second stage.

We will continue to support both specific ‘projects’ and overall operating costs for organisations with goals in line with our vision. We’ll also look for other ways to add value to the work of organisations that we support with funding, including seeking opportunities to work in partnership with others.

As you can imagine, there is a lot changing at this end. It is quite likely that we’ll make some adjustments to the process as we go.

More information about these changes and a comprehensive explanation of the new criteria for applicants is available on our website [www.jrmckenzie.org.nz](http://www.jrmckenzie.org.nz). If you would like to discuss any of these changes, you are welcome to contact us on (04) 472 8876 or [info@jrmckenzie.org.nz](mailto:info@jrmckenzie.org.nz)

The Trust endorses the proverb, “Iti noa ana, he pito mata” (with care, a small kumara will produce a harvest). We believe the changes will help the Trust to retain relevance and impact in the future and deliver ongoing benefits to our country.

Te Korowai Kaumatua O Hauraki	\$3,500	Volunteering Hawkes Bay	\$3,000	<b>Taranaki to Wellington</b>	
Te Whakaritorito Trust	\$1,500	Volunteering Waikato	\$3,000	Abbat Trust	\$2,500
Te Whangai Trust	\$4,000	Waihi Community Resource Centre	\$1,500	Accident Support Services – NZ	\$2,000
Te Whare o te Ata Fairfield/Chartwell Community	\$3,174	Waihi Family Life Trust	\$6,000	ACROSS Social Services	\$2,000
Thames/Hauraki Health & Disability Resource Centre	\$3,500	Waikato Family Centre Trust	\$3,000	Acting Up Charitable Trust	\$2,500
The Care Community Trust	\$3,000	Waikato Queer Youth	\$3,000	Agape Budgeting Service Ltd	\$2,300
The Hub Youth Charitable Trust	\$3,000	Waiotahi Trust	\$5,000	Agape Fellowship Charitable Trust	\$2,500
Timi Kara Marae	\$3,000	WERa Aotearoa Charitable Trust	\$4,000	Amesbury Christian Counselling Service	\$2,500
Tirohia te Kopere Trust	\$2,000	Western Community Centre	\$3,000	Anglican Social Work Trust	\$2,000
Tokoroa Senior Citizens And Welfare Centre	\$3,000	Whakatane Baptist Community Charitable Trust	\$3,000	CAMS Trust	\$2,500
True Colours Charitable Trust	\$7,500	Whangamata Community Services Trust	\$1,500	Catacombs Incorporated	\$2,500
Voice Advocacy Trust	\$2,000	Whitianga Community Services Trust	\$1,500	Central & South Taranaki Youth Development Trust	\$2,000



# Rare genetic conditions



Children meet the animals at Orana Park while their parents attend the Lysosomal Conference in Christchurch

Right: Dogs can have lysosomal conditions too. Tim and Sarah make friends with one of them.

Lysosomal Storage diseases are inherited rare genetic defects leading to progressive physical and/or mental deterioration over time. Life expectancy averages about 15 years. The conditions affect about 180 New Zealanders. **Lysosomal Diseases New Zealand** advocates for accelerated research and specialist services, educates, supports affected individuals and families and builds international networks.



Central Region Advocacy Service	\$2,000	Horowhenua District Health Transportation Trust	\$2,500	Levin Christian Care Trust	\$2,500
Challenge 2000	\$2,500	House of Hope Trust	\$3,000	Lower Hutt Women's Centre Inc	\$2,500
Chelsea and Marsden Day Care Trusts	\$3,000	Housing Advice Centre	\$2,000	Manawatu Pregnancy Centre Trust	\$2,500
Christian Social Services Wanganui	\$2,500	Huntingtons Disease Assn (Wellington) Inc	\$2,500	Manchester House Social Service	\$3,000
Counselling & Education Centre (Marton) Inc	\$4,000	Hutt Valley Disabled Resources Trust	\$1,380	Maota Samoa Charitable Trust	\$2,500
Counselling & Education Centre (Marton) Inc	\$5,000	Incredible Families Charitable Trust	\$3,000	Methodist Social Service Centre	\$3,000
Cross Roads Christian Community Trust	\$2,200	Kai Arahi Trust	\$2,500	New Plymouth Community Foodbank Trust	\$2,000
Crossroads (PN) Community Trust	\$2,000	Kapiti Choices Inc	\$2,000	Newtown Community & Cultural Centre	\$2,500
Downtown Community Ministry	\$3,000	Kapiti Community Enterprises Trust	\$2,950	Northpoint Lifecare Trust	\$2,000
Dress for Success Wellington Inc	\$2,500	Kapiti Family Centre Inc	\$2,000	Otaki Women's Health Group Inc	\$2,500
Emerge Supported Employment Trust	\$2,500	Kapiti Women's Health Collective Inc	\$2,500	Palmerston North Street Van (Inc)	\$2,500
Hawera Rape Crisis Inc	\$3,000	King Street Artworks	\$2,500	Palmerston North Women's Health Collective	\$2,500





## The 21,000th volunteer

Volunteer 21,000! Simon Robertson, a Civil Engineering Manager, with **Volunteering Canterbury's** manager, Ruth Gardner. Simon was helping pack food parcels and has pledged his company's support to Volcan. Volcan helps match individual interests with the thousands of groups in Canterbury who need volunteers.



All hands to the buckets at an adobe brick building workshop at **Waimarie Community House, Hamilton**. Waimarie provides a range of services to the local community from a listening ear and a cup of coffee to community education and craft courses, children's holiday programmes, free budgeting and legal advice, access to benefit advocacy, a vege co-op and room hire.



Post & Ante Natal Distress Support Group Inc	\$2,000	SWINGS (Supporting Women in New Growth Skills)	\$2,000	ThroughBlue	\$2,000
Refugee Family Reunification Trust	\$3,000	Taihape Community Development Trust	\$2,000	Trinity Youth of our Future Trust – Youth Quest	\$5,000
River Exchange & Barter System	\$1,500	Taihape Youth Centre Trust	\$2,000	Tupoho-Iwi and Community Social Services Trust	\$1,500
Samaritans (Hutt Valley) Inc	\$2,500	Taranaki Restorative Justice Trust	\$2,000	Valley Transitionz Inc	\$2,500
Samaritans of Wanganui Inc	\$2,500	Taranaki SAFER Family Centre	\$2,000	Vincents Art Workshop Inc	\$2,500
Samaritans of Horowhenua	\$1,000	Taranaki Young Peoples Trust	\$2,000	Volunteer Whanganui	\$2,000
Sexual Abuse Healing Centre (Wanganui) Inc	\$2,500	Tautoko Services	\$2,500	Wainuiomata Community House	\$2,500
Sir Charles Burns Recovery Centre Trust	\$3,000	Te Akamataanga Ou Trust	\$2,000	Wairarapa Community Centre	\$2,000
South Taranaki Women's Centre	\$3,500	Te Marama Taka Hou Inc	\$2,000	Wairarapa Community Counselling Centre Inc	\$2,500
SPELADD NZ Inc	\$2,000	Te Wananga o Tamaki Nui A Rua Inc	\$3,000	Wairarapa Organisation for Older Persons Inc	\$2,000
Street Youth Ministries Trust	\$3,000	Teach Me Trust	\$2,500	Wairarapa Stars Trust	\$2,000
Suzanne Aubert Compassion Centre	\$2,500	The Learning and Growing Together Trust	\$3,000	Wairarapa Women's Centre Inc	\$2,000





Top: Jason, a solvents abuser who received employment with Pathway Trust.

*“Pathway Trust has changed me in a way that I feel free... I’m in jail, but I’m not imprisoned with myself anymore...”*



Right: two released prisoners planting in Canterbury. Pathway supported both back into the community. Both successfully completed the Pathway reintegration support plan. Pathway provides supported accommodation, helps reintegrate released prisoners, runs restorative justice programmes and provides employment opportunities.



Children and young people attending the **Island Child Charitable Trust** programmes face learning difficulties and troubled or traumatic backgrounds. Relating to and riding ponies in the Trust’s **Animal Assisted Learning** programme helps children gain self-confidence. They also pick up life skills while having fun, attend camps, horse shows and ribbon days in the Auckland area.

Above: Three children on the programme with the Trust’s manager and Lollipops, the pony.



Wellington Rape Crisis Inc	\$2,000	<b>Nelson to Canterbury</b>		Christchurch Peoples Resource Centre	\$2,500
Wellington After-care Association Inc	\$2,500	180 Degrees Trust	\$2,500	Cross Over Trust	\$5,000
Wellington Down Syndrome Social Club	\$2,000	Addington Net Inc	\$2,500	Crossroads (Marlborough) Charitable Trust	\$2,000
Wellington Early Intervention Trust	\$2,500	Agape Trust	\$2,000	Disabled Persons Centre Trust	\$2,250
Wellington Regional 2020 Communications Trust	\$3,000	Ambrosia Empowerment Trust	\$2,500	Dress for Success	\$2,500
Wellington Sexual Abuse Help Foundation	\$2,500	Ashburton Community Alcohol & Drug Service	\$1,000	Eating Awareness Team	\$1,500
Wellington Women’s Health Collective	\$2,500	Autlink Foundation Inc	\$2,000	Familial Trust	\$2,000
WellTrust	\$2,500	Beneficiaries & Unwaged Workers Trust BUWT	\$2,000	Father and Child Trust	\$2,500
Whanganui Employment Support Services Trust	\$2,500	Blackball District Community Centre Inc	\$1,000	Floyds Creative Arts Charitable Trust	\$2,000
Whanganui Peoples Centre	\$2,500	Burwood Community Church Trust	\$1,500	Green Effect Trust	\$1,000
Women’s Centre New Plymouth Inc	\$2,000	Canterbury Mental Health Education and Resource	\$1,500	Hepatitis C Resource Centre Te Wai Pounamu	\$2,000
Youth Services Trust Whanganui	\$2,500	Child Helpline Trust (Inc)	\$1,500	Home and Family Society Christchurch Inc	\$2,000





Julie Rudsdale boasting about her recent catch, freshly caught off a local fisherman!



Rae Alexander, giving a visiting tour group a few lessons in papermaking and disabilities.

At the **Papermill** in Whangarei people with intellectual disabilities are professionally trained to make quality craft papers and popular stationery and ornamental items. Papermill's garden often provides ingredients needed. The workers also have unforgettable experiences (left).



Above: emerging from a bowlful of runny jelly during **Te Ora Hou's** Food Olympics Club night. Left: a higher level of contemplation.



*Te Ora Hou* is a Christchurch-based youth organisation that works with children from low income families, seeking to give them role models and mentors.



Inner City Interagency Trust	\$4,000	Pain Action in New Zealand Inc	\$1,500	Te Pani Trust	\$1,000
Lyttelton Harbour Basin Youth Council Inc	\$2,056	Pathway Trust	\$2,500	Te Whare Roimata	\$1,500
Male Survivors of Sexual Abuse Trust	\$2,500	Post Natal Depression Support Network Nelson	\$2,000	Tranx Inc	\$2,000
Marlborough Youth Trust Inc	\$2,000	Potikohua Charitable Trust	\$2,500	Victory Community Health Centre	\$3,000
Mothers Supporting Mothers	\$2,000	Reefton Who Cares Inc	\$2,000	Volunteering Canterbury	\$2,000
Murchison Sport, Recreation & Cultural Centre Inc	\$1,000	Restorative Justice Services Otautahi Christchurch	\$2,000	Waltham Community Cottage	\$3,000
Nelson Rape and Sexual Abuse Network	\$2,500	Rivendell Respite Trust	\$2,500	West Coast Recovery Drop In Centre Trust	\$2,000
Nelson Women's Support Inc	\$2,000	Rowley Resource Centre	\$3,500	Women's Centre Inc	\$2,500
New Harvest Trust	\$1,500	Sexual Abuse Survivors Trust	\$2,500	Women's Health Information Centre (THAW)	\$1,605
Northgate Community Services Trust	\$2,000	Shoreline Youth Trust	\$1,500	Youth Alive Trust	\$2,000
Our Youth Our Community Charitable Trust Inc	\$1,500	Special Needs Library	\$2,000	<b>South Canterbury to Southland</b>	
Oxford Community Trust	\$1,500	START Inc	\$2,500	Advisory & Support Centre Otago Inc	\$2,500



# Participating in community life



*Wrap your tongue around that! Clients with the **Paul Hunter Centre** in Waipukurau spread themselves out along the longest place name in the world on a day outing to Porangahau. The Paul Hunter Centre helps people with a wide range of disabilities to gain vocational and social skills and participate in community life.*



*Shane lives independently in one of the purpose-built **Ryder Cheshire Foundation's** homes in Hamilton. The foundation owns and oversees the operation of the homes which cater for people with moderate to severe physical disabilities. Residents appreciate their independence, the care and companionship they can give each other and their easy access to the local community.*



*Painting again, with the help of a standing frame. The **New Zealand Spinal Trust's** Kaleidoscope programme assists people with spinal cord impairment back into the workplace, either into jobs they had before their accidents or into productive new occupations.*



Alpine Community Development Trust	\$3,000	Northern Southland Community Resource Centre	\$1,000	Straight Up Trust	\$2,000
Caroline House Inc	\$2,500	Otago Childrens Autism Support Group Trust Board	\$2,000	Te Ao Huri	\$1,000
Catholic Social Services Dunedin	\$3,000	Otago Youth Wellness Trust	\$2,500	Te Oruanui Inc Soc	\$2,000
Central Otago Women's Support Link	\$2,000	Peel Forest Outdoor Pursuits Centre Charitable Trust	\$2,000	The Methodist Mission	\$2,000
Centrecare Counselling Waimate Inc	\$2,000	Queenstown Lakes Family Centre	\$2,500	Timaru Senior Citizens Assn Inc	\$3,000
Chatbus Trust	\$3,000	Rape and Abuse Support Centre Southland Inc	\$2,000	Volunteering Otago	\$2,000
Connections Education and Development Trust	\$2,500	Saddle Hill Foundation Trust	\$2,500	Wakatipu Abuse Prevention Network Inc	\$2,000
Cromwell Youth Worker Trust	\$2,500	South Canterbury Women's Wellness Centre	\$2,000	Wakatipu District Youth Trust	\$2,000
Family Network Inc	\$3,500	South Centre	\$2,000	West Dunedin Youth and Community Trust	\$2,000
Jenny's Companionship Group Inc	\$3,000	Southern Cross Kids Camps	\$2,000	<b>Innovative Grants</b>	
Kahu Youth Trust	\$3,000	Southland Beneficiaries & Community Rights Centre	\$2,500	Auckland Sexual Abuse HELP Foundation	\$20,000
New Hope Community Trust	\$1,000	Southland Foodbank Charitable Trust	\$2,000	ChangeMakers Refugee Forum	\$20,000





Four year old Dartanyon Muliaga can now sit on this prototype trike by himself and is learning how to ride it. Groups associated with the **Foundation for Conductive Education** encourage children, young people and adults with motor disorders to be as active and as independent as possible.



These four kids will be going home with full pukus. One of the course participants with four of her 11 children in the Kai Time community cooking kitchen.

**Supergrans**, Tairāwhiti (Gisborne) runs workshops teaching parents how to prepare nutritious low-cost meals for their large families. Everyone leaves with the recipes.



Haeri mai, Haeri mai, Haeri mai, three times welcome! Te Whe Phillips, a kaumatua from Ngai Tahu greets Trevor Maxwell, Deputy Mayor of Rotorua (Te Arawa) at a powhiri at the Te Papa marae at the annual **Philanthropy New Zealand Conference**. Philanthropy NZ seeks to inspire generosity and thoughtful grant making in New Zealanders. The organisation was established in 1990 by Sir Roy McKenzie, founder of the J R McKenzie Trust.



Children's Autism Foundation	\$7,000	The Fledgling Trust – Mixit Programme	\$20,800	Dubbelt	\$1,500
Christchurch Early Intervention Trust (Champion Ctr)	\$30,000	Tindall Foundation – Community Foundations Capacity	\$20,000	Fallon Simchowit	\$6,500
Colville Community Health Trust	\$15,000	Wesley Community Action	\$20,000	M Vale	\$40
Community-Led Development Trust	\$25,000	Working Together More Fund	\$100,000	N May	\$3,000
Grey District Young Persons Development Trust	\$5,000	<b>Te Kāwai Toro</b>		Sign Language Interpreters Assoc of NZ	\$1,600
KITES Trust	\$10,000	Maungarongo Pa Trust	\$40,000	Victoria University of Wellington – study grants	\$30,000
MCLaSS – Multicultural Learning and Support Services	\$10,000	Ngatokowaru Marae Committee	\$7,900	<b>Chair's grants</b>	
Mika Haka Foundation	\$24,000	<b>Deaf Development Fund</b>		Afghan Association of NZ	\$3,000
Rape Prevention Education	\$21,000	D Buzzard	\$3,000	Alcohol Healthwatch	\$2,500
Rotary District 9910 – Oral Hygiene Programme	\$12,000	Daniel Greenwood	\$2,000	Alternative Education National Body Inc	\$2,980
Tautai Contemporary Pacific Arts Trust	\$10,000	Deaf Aotearoa New Zealand	\$6,000	Back-up New Zealand	\$3,000
Te Aroha Noa Community Services Trust	\$25,000	Deaf Sports in Taipei – 6 grants	\$6,000	FAST (NZ) Inc	\$1,500



*It's about trust and teamwork. If any one of the men in the straining circle breaks the link everyone falls. Fathers, mentors and teenage boys at the 5-day Essentially Men, **Pathways to Manhood** programme north of Auckland. "One of the most memorable moments in my life is seeing fathers with tears rolling down their cheeks as they try to express thanks for the development of their relationships with their sons." Nathan Duxfield (Pathways instructor)*

*"It is a great place to learn about becoming a man and about the man you want to become."*

*(Youth aged 14)*

## You can make a real difference

### Support the Jayar Charitable Trust

The Jayar Charitable Trust is seeking bequests and sizeable donations to add to the capital of the trust, ensuring your generosity will be relevant and valuable year after year. You can use the Jayar Charitable Trust as a proven investor and the J R McKenzie Trust as a distributor of philanthropic giving with a long and distinguished history. Giving to the Jayar Charitable Trust is a simple and cost effective alternative to setting up your own stand-alone philanthropic trust.

You can make a real and lasting difference to those in need throughout New Zealand.

There are no set-up costs. No administration fee is deducted from your donation. Jayar Charitable Trust has a very cost effective management structure.

Your ongoing generosity can be acknowledged.

Contact: Iain Hines

(04) 472 8876

info@jayar.org.nz

www.jayar.org.nz

Motueka Short Term Accommodation Charitable Trust	\$2,000
myBLOCK	\$2,500
NZ Federation of Voluntary Welfare Organisations	\$2,500
Pai 4 ASD Trust	\$3,000
Pax Christi Trust	\$3,000
Prader-Willi Syndrome Assoc	\$2,570
Seabrook McKenzie Trust	\$3,500
Tairawhiti REAP Inc	\$2,500
Tangata Whenua, Community & Vol Sector Research Centre	\$200
WellStop	\$1,000



*One of Queenstown's professional chefs with a dozen of the town's young people at the Cheffing Challenge finale organised by the **Wakatipu District Youth Trust**. The finale wrapped up a six week's cooking course organised by the Trust. The Otago Polytechnic made a Cookery Scholarship available.*





# Where does the money come from?

## Rangatira Limited

This investment company was founded by Sir John McKenzie in 1937. Rangatira's initial investment was a majority interest in J R McKenzie Limited, the New Zealand-wide chain of department stores. Over the years, Sir John and other family members have gifted shares in Rangatira to the J R McKenzie Youth Education Fund, the J R McKenzie Trust and other charities. Charitable bodies hold over 60 percent of the issued share capital.

Chaired by Murray Gough, Rangatira has a policy of investing in a range of listed companies, as well as unlisted New Zealand companies with growth potential.

Rangatira is in a strong financial position, with shareholders' funds of \$133 million and assets of \$160 million.

In 2008-09 the Trust received \$3.37 million from Rangatira Limited.

Contact: Ian Frame  
(04) 472 0251  
[www.rangatira.co.nz](http://www.rangatira.co.nz)

## Jayar Charitable Trust

The Jayar Charitable Trust is an investment fund whose returns are given to the J R McKenzie Trust to distribute for charitable purposes in New Zealand. The Jayar Charitable Trust is in effect an investment arm of the J R McKenzie Trust, which appoints its trustees.

The Trust's investment objective is to maximise returns over the long term, with tolerance for a loss one year in five. On average the Trust retains 1% more than the rate of inflation.

The balance of returns each year is given to the J R McKenzie Trust for distribution.

Since its inception in 1998 Jayar has contributed \$2.2 million.



Lady Shirley McKenzie and Sir Roy McKenzie (1922-2007)

“... *the only use of money is the use you make of it*”



*What do you do when a kid twice your size steals your lunch, punches you in the face and says “YOU BETTER RUN BOY!”*

Left: **UrbanYOUTHMovement** dancer Joash Tuugamusu (foreground) at rehearsals for UYM's new production, “YOU BETTER RUN BOY!” which explores the problem of bullying in schools and on the streets. “Fast, fierce and funny. Will make you want to laugh at a bully, hug a bully and bully a bully!” says a review.



**Youthline's** Auckland Alternative Education students at their 2009 annual camp. Youthline's program is strongly mentor and relationship based. Twelve teenagers spend from one term to two years in the school, identifying and achieving their goals, which include returning to mainstream education, attending tertiary training or finding employment.



# Financial report for the year ending 31 March 2009

## Where the grants went

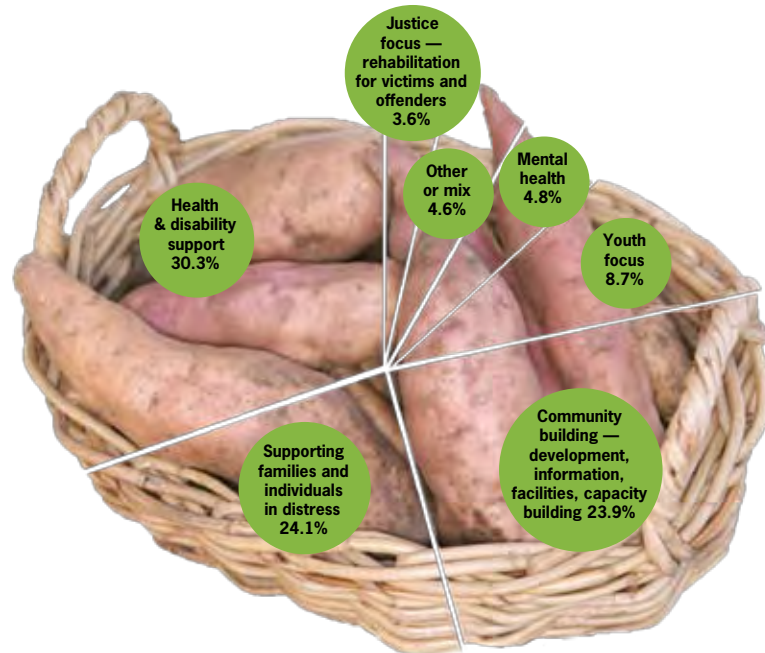
Grants made this year totalled \$3.36 million. 724 groups applied for grants, excluding those part way through a multi-year funding arrangement. 542 groups (three-quarters of applicants) were successful to some extent.

Grants to regional organisations averaged \$2,600, and those to national organisations \$11,900.

The Trust made grants to organisations assisting a wide range of people.

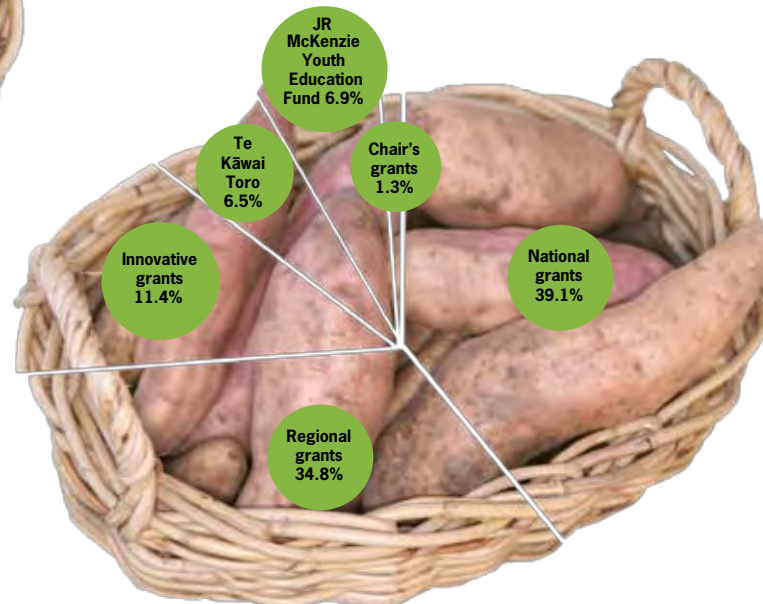
*“There are always people in our community with initiative and enterprise, developing services or working on projects that are aimed at alleviating social disadvantage or improving society in some way .... as grant makers you will die poorer but be richer in spirit and rewards.”*

*Sir Roy McKenzie*



## Grants distribution

Four in five grants assisted with core operating costs, including salaries, rent, volunteer costs etc. Organisations working specifically for and with Māori received 10.2% of funds granted, Pacific Island groups 1.6%, and 3.7% went to groups working specifically with other ethnic communities including refugees.



*Grants were made to national and regional organisations, as well as to projects supported for their innovative focus:*

*Expenditure on administration and salaries for the year totalled \$379,000, and a further \$178,000 was spent on programme development.*

*The balance sheet shows total Trust Funds of \$53.6 million.*

*A full set of audited accounts is available from the office.*



**J R MCKENZIE TRUST**  
ESTABLISHED IN 1940

*Iti noa ana, he pito mata –  
With care, a small kumara will produce a harvest.*







**The Workplace Wellbeing Project** is a collaborative approach to assuring good employment practices and relationships in the tangata whenua, community and voluntary sector. Above: the face of the sector at a Project workshop in Hamilton.

*Iti noa ana, he pito mata –  
With care, a small kumara will produce a harvest.*

